

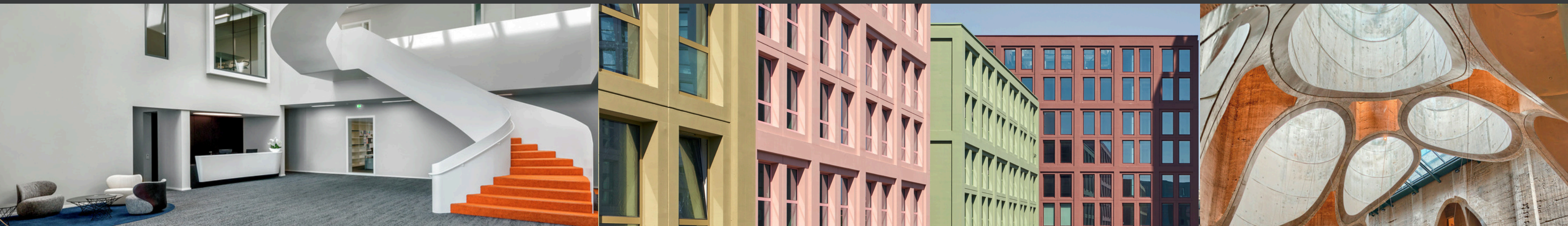
# MINERAL PAINTS FOR MINERAL SUBSTRATES

## Cradle to Cradle Certified® Silver

Cradle to Cradle Certified® is the world's most advanced, science-based standard for designing and making products today that enable a healthy, equitable, and sustainable tomorrow.



Cradle to Cradle Certified® is a registered trademark of the Cradle to Cradle Products Innovation Institute (C2CPII).



### INTERIOR PAINTS

- BIOSIL
- BIOSIL-EXPORT
- BIOSIL-PLUS
- COLOURWASH MINERAL GLAZE
- COLOURWASH-BASE
- COLOURWASH-LIME-PRIMER
- COLOURWASH-TEXTURED-UNDERCOAT
- ECOSIL-ME
- FIXATIV
- GW-PRIMER
- INNOPRIM
- INNOPRO
- INNOSTAR
- INNOTOP
- INNOTOP-GROB
- INTACT
- INTERIOR MINERAL PRIMER
- INTERIOR MINERAL WALL PAINT
- MYCAL-FIX
- MYCAL-TOP
- OBJEKTSILIKATINNENFARBE
- OPTIL
- OPTIL-GROB
- QUARZIL
- QUARZIL-GROB
- SPEZIAL-FIXATIV
- TISENZA
- UNICA

### EXTERIOR PAINTS

- AQUAROYAL-COLOR
- CONTACT-PLUS
- CONTACT-PLUS-GROB
- DESIGN-BASE
- DESIGN-FIXATIV
- DESIGN-LASUR
- EGALISATIONSFARBE
- EXTERIOR MINERAL BONDING PRIMER
- FINITURA
- FINITURA-FIXATIV
- FINITURA-GROB
- GRANITAL
- GRANITAL-GROB
- KRISTALL-FELSIT
- KRISTALL-FELSIT-FEIN
- MINERAL MASONRY PAINT
- PURKRISTALAT
- RESTAURO-FIXATIV
- RESTAURO-LASUR
- SOLDALAN
- SOLDALAN-ARTE
- SOLDALAN-GROF
- SOLDALAN-ME
- SOLDALAN-VERDUNNING
- SOLDALIT
- SOLDALIT-ARTE
- SOLDALIT-COOLIT
- SOLDALIT-FIXATIV
- SOLDALIT-GROB
- SOLDALIT-ME
- TWINSTAR
- UNIKRISTALAT
- VERAMIN

### CONCRETE SYSTEMS

- CONCRETAL-AD
- CONCRETAL-BASE
- CONCRETAL-BLACK
- CONCRETAL-FIXATIV
- CONCRETAL-LASUR
- CONCRETAL-PRO
- CONCRETAL-W
- CONCRETAL-W-GROB
- CONCRETON-BASE
- CONCRETON-BLACK
- CONCRETON-FIXATIEF
- CONCRETON-LASUR
- CONCRETON-W
- CONCRETON-W-GROF

# MINERAL PAINTS FOR NON-MINERAL SUBSTRATES

## Cradle to Cradle Certified® Silver

Cradle to Cradle Certified® is the world's most advanced, science-based standard for designing and making products today that enable a healthy, equitable, and sustainable tomorrow.



## WOOD SYSTEMS

- LIGNOSIL-ARTIS
- LIGNOSIL-VERANO
- LIGNOSIL-INCO
- LIGNOSIL-VERANO-DL
- LIGNOSIL-INCO-DL