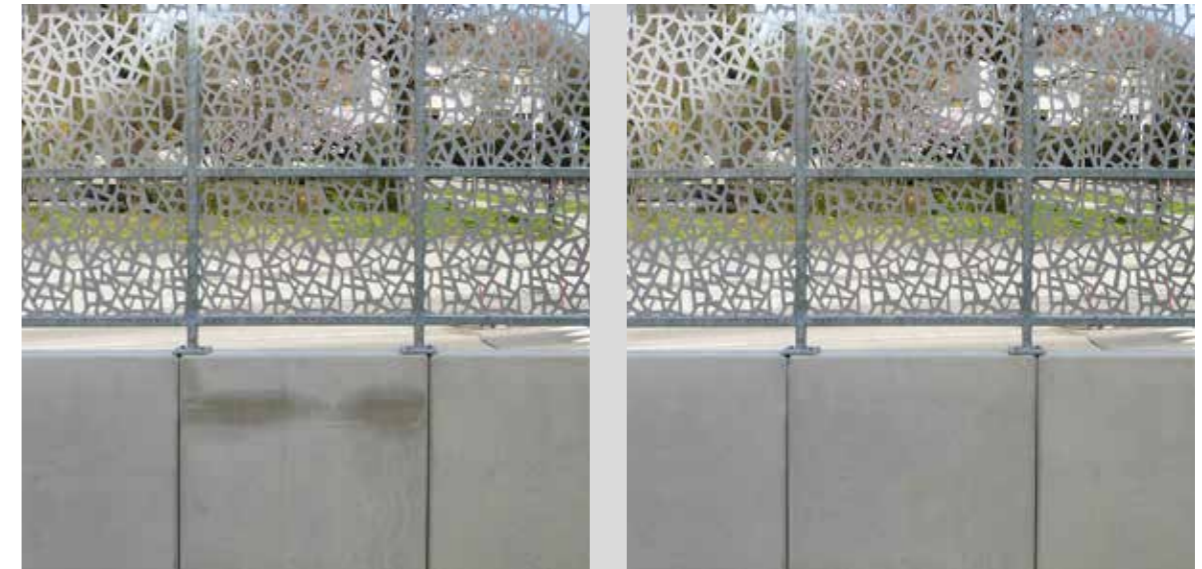


CONCRETE DESIGN

WITH KEIM CONCRETAL[®]-LASUR
AND KEIM CONCRETAL[®]-BLACK

PURE CONCRETE AESTHETICS
LONDON AQUATICS CENTRE
BY ZAHA HADID

KEIM CONCRETAL®-LASUR REFINES CONCRETE



Refinement of fair-faced concrete in three steps: 1. Gentle cleaning without abrading the material. 2. Full-cover stain coating to match the colours. 3. Partial touch-ups and colour matching to correspond with the surrounding colour shade. (Concrete cosmetics by OptiBeton, © OptiBeton)

PRESERVING THE CHARACTER OF CONCRETE

Honest, raw, material pure: Fair-faced concrete, once considered as ordinary and unspectacular, is today an accepted building material and even more than that. Concrete is trendy! Concrete is cool! This idea that concrete has to be always grey is no longer true. Today concrete can wear almost any colour, a bright blue, red or yellow, it can even shimmer in silver and gold. Concrete is the supporting and shaping element and determines the architectural attraction of a structure. Directly following the formwork removal or after decades of weathering - decisive is the surface treatment because it defines the character.

TRANSPARENCE FOR CONCRETE

Here KEIM Concretal-Lasur comes into play, a semi-transparent concrete stain coating. Strictly speaking, staining of concrete building elements is a colour modulation to cover the 'natural shade' with a new tone. Visual shortcomings can be equalised or a colourful design performed. A special feature is that the concrete keeps its visual character and even enhances the expression.

CONVINCING BENEFITS

- Retention of the original concrete aesthetics
- Perfect levelling of unevenly appearing fair-faced concrete surfaces
- Strengthening action thanks to siliceous silicification
- High weathering protection
- Very fast redrying thanks to extremely low sd (H₂O)-value
- Mineral matt surface
- Absolutely light-resistant by purely, mineral pigments
- Any concrete colour shade can be formulated
- Minimal soiling due to the anti-static, non-thermoplastic binding agent
- Preserves the texture

In brief: KEIM Concretal-Lasur is mineral matt protection and pure concrete aesthetics!

KEIM CONCRETAL®-LASUR PROBLEM SOLVER FOR FAIR-FACED CONCRETE

CONCRETE COSMETICS

Sometimes concrete behaves like a diva and tends to have unexplainable streaks, discolouration or blowholes that affect the surface appearance substantially. Exactly here is it time for KEIM Concretal-Lasur which, when diluted in various degrees, helps to conceal visual shortcomings so that the finish looks like the original intent. Pure and vibrant fair-faced concrete appearance.

MINERAL MATT CONCRETE LOOK

Mineral concrete stains look way more natural than synthetic coatings because they don't cover the natural texture of concrete. KEIM Concretal-Lasur accentuates and preserves the material's character. Plus, stains provide clearly more flexibility than tinted concrete, especially when it comes to colour designs.

PROBLEM



New concrete with slight blemishes

SOLUTION



Uniform, mineral surface with KEIM Concretal-Lasur
© Arbeitsgemeinschaft Betonlasur



New concrete with severe blemishes



Blemishes either strongly equalised or complete colour-matched mineral finish / © OptiBeton



New concrete with defects that need to be refilled



Refilled areas either strongly equalised or complete colour-matched mineral finish / © Arbeitsgemeinschaft Betonlasur



Shops →
Restaurant
Parkdeck
-Benz Center

Watch our KEIM video:
"Explore the beauty of concrete"



CONCRETE STAIN SYSTEM

The exceptional mineral system KEIM Concretal-Lasur comprises KEIM Concretal-Lasur/-AP and two variants of dilution, KEIM Concretal-Lasur/-AP, KEIM Concretal-Base/-AP and KEIM Concretal-Fixativ. The -AP Version of the product is particularly formulated to be used under tropical or subtropical climatic conditions. All products can be mixed together in any desired degree, guaranteeing maximum design flexibility and perfect colour match of the concrete surfaces. Some dilution levels are pictured below.

DIFFERENT DILUTION LEVELS

From opaque (left) to very transparent (right)



untreated concrete



THE BEAUTY OF CONCRETE. IN GREY ...

MINERAL CONCRETE STAIN FOR THE NEW MASTERS' HOUSES IN DESSAU

The ensemble of Masters' Houses in Dessau has been renovated after years of research and discussion. However, not in a reconstructed but in an abstract way. The building envelope consists of insulating concrete that was visually homogenized with KEIM Concretal-Lasur. A monolithic appearance of the building is not least a question of the insulating concrete's surface homogeneity which was requested by the planners. Yet, it was difficult to guarantee and the decision was made to perform the finish with a mineral stain.



New Masters' Houses in Dessau; Architecture: Bruno Fioretti Marquez Architects; performance: Arbeitsgemeinschaft Betonlasur Berlin

HOMOGENISATION OF THE CONCRETE SHELL

Through colour matching of the deviations of the grey colour shades and brightening of the concrete that was too dark, resharpening of the edges and repair of damages, it was also possible to conceal the conical and refilled anchor holes from the framework. Followed by a slightly white pigmented KEIM Concretal-Lasur, applied by hand with a paint brush.

"Concrete stain requires respect for the object, expertise and an extensive knowledge of materials."

Oliver Jungheim, Arbeitsgemeinschaft Betonlasur

... OR IN COLOUR



KEIM CONCRETAL®-BLACK

THE DEEPEST BLACK KNOWN TO CONCRETE!

THE BEAUTY OF BLACK IN FIVE SEDUCTIVE SHADES

BLACK – STRONG, TIMELESS, ELEGANT

Black facades are a statement of our time. Setting individual and powerful accents in five shades of Black. KEIM Concretal-Black opens up new dimensions in designing concrete. KEIM Concretal-Black is absolutely light-resistant, UV-stable and highlights the natural beauty of concrete.



KEIM takes responsibility for society and for the environment. The certificate Cradle to Cradle Certified® confirms our commitment and the use of environmentally friendly, healthy and recyclable materials, a climate-friendly and responsible production process and the use of renewable energies.

The products KEIM Concretal-Lasur and KEIM Concretal-Black featured in this brochure are Cradle to Cradle Certified.

BENEFITS

- Intense black
- Absolutely UV-stable: Black stays black!
- Mineral matt aesthetic appearance



FIVE CLASSY COLOUR NUANCES FOR DIFFERENT COLOUR EFFECTS:



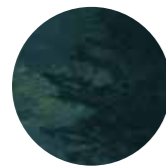
PURITY

Pure black is pitch-dark, somewhat dramatic and has a graphic effect that is hard to resist. KEIM Concretal-Black Purity - the pure power of black!



AURORA

A black night glows with the harmonic red of the rising sun. KEIM Concretal-Black Aurora – like the warm mood of a splendid sunrise.



FOREST

Deep black with a touch of mystic green. Inspired by the fir trees of the mystical Black Forest. KEIM Concretal-Black Forest – the mysterious black.



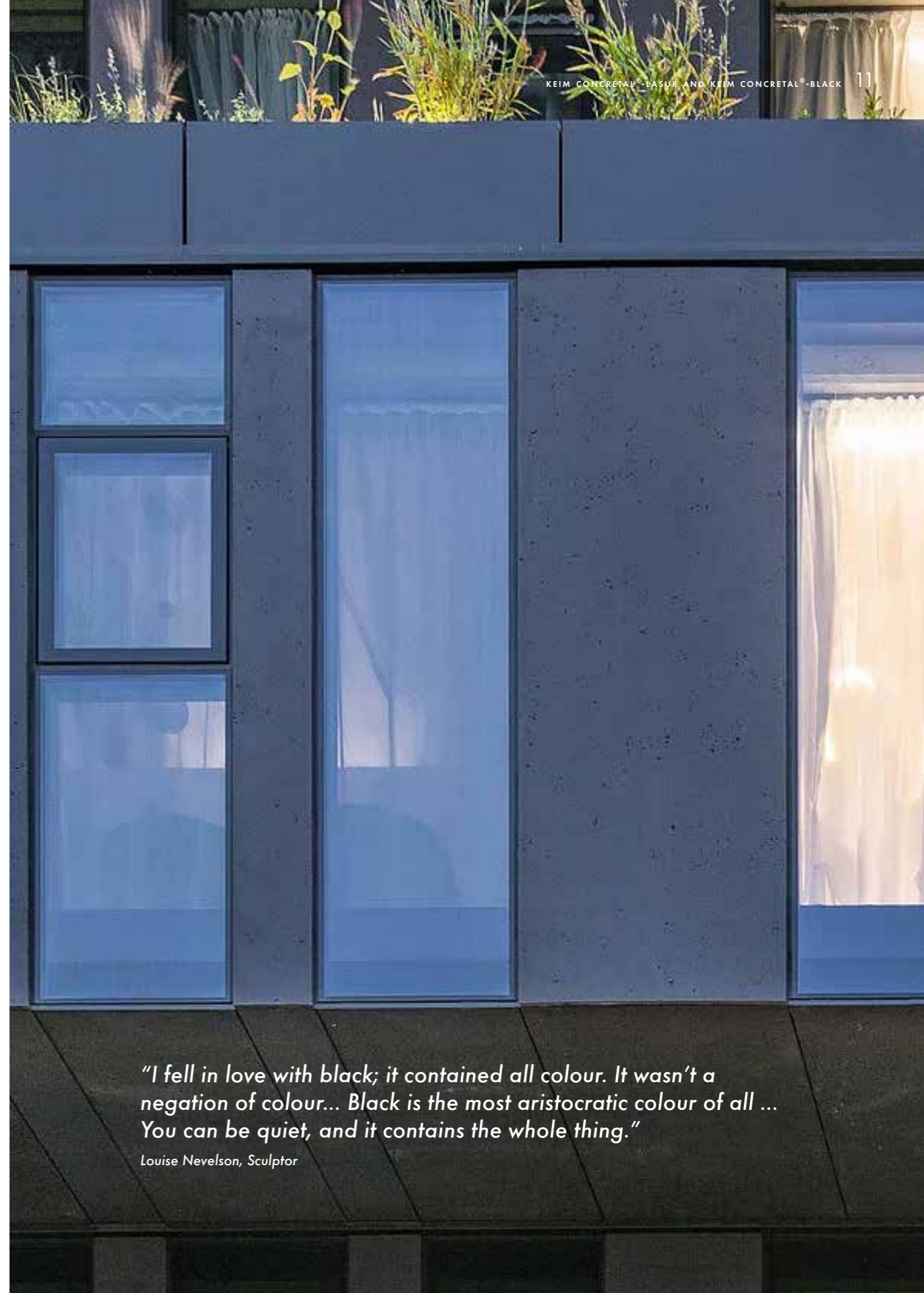
ECLIPSE

Pure black accentuated by a light yellow tone. KEIM Concretal-Black Eclipse – unique like the natural spectacle of a solar eclipse.



PEARL

Elegant black with a deep blue nuance. Inspired by the dark pearls from the depths of the ocean. KEIM Concretal-Black Pearl – precious like a South Sea pearl.



“I fell in love with black; it contained all colour. It wasn’t a negation of colour... Black is the most aristocratic colour of all ... You can be quiet, and it contains the whole thing.”

Louise Nevelson, Sculptor



KEIMFARBEN GMBH

Keimstraße 16 / 86420 Diedorf / Tel. +49 821 4802-0 / Fax +49 821 4802-210
Frederik-Ipsen-Straße 6 / 15926 Luckau / Tel. +49 35456 676-0 / Fax +49 35456 676-38
www.keim.com / info@keimfarben.de

KEIM. COLOURS FOR EVER.